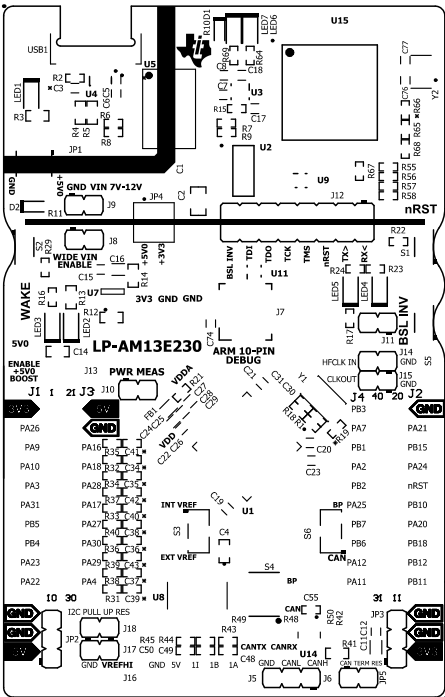
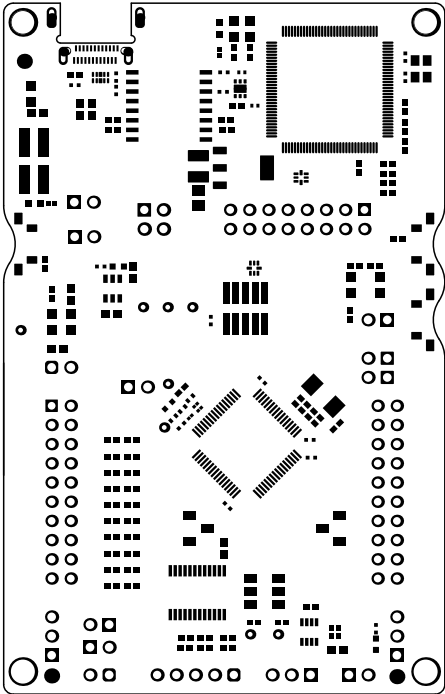


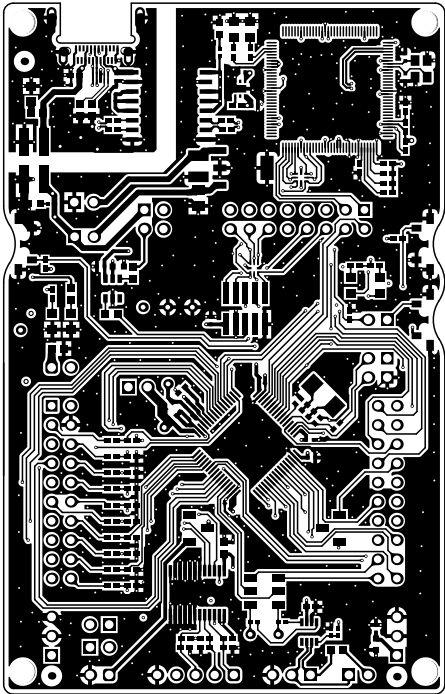
U2
Z22
Z23



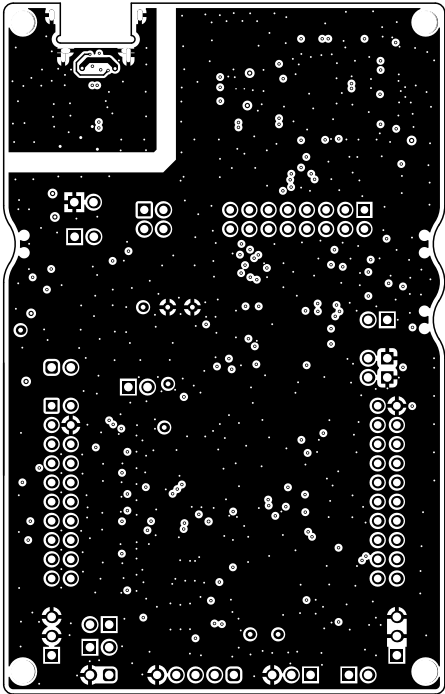
ALL ARTWORK VIEWED FROM TOP SIDE	BOARD #: MCU178	REV: E2	SUN REV: Not in version control
LAYER NAME = Top Overlay	TID #: N/A		
PLOT NAME = Top Overlay	GENERATED : 2/19/2026 9:39:08 AM	TEXAS INSTRUMENTS	



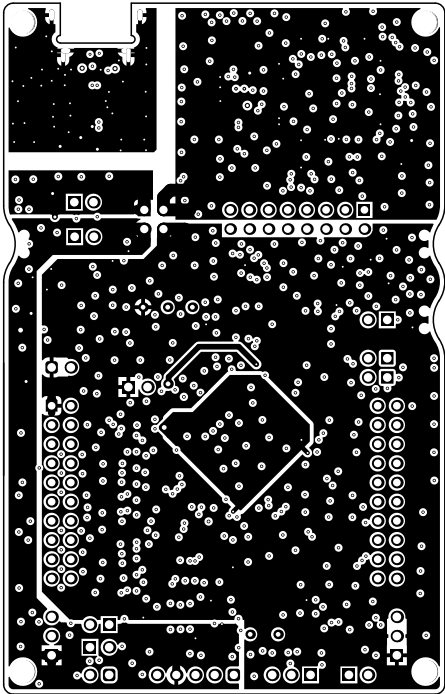
ALL ARTWORK VIEWED FROM TOP SIDE	BOARD #: MCU178	REV: E2	SUN REV: Not in version control
LAYER NAME = Top Solder	TID #: N/A		
PLOT NAME = Top Solder Mask	GENERATED : 2/19/2026 9:39:08 AM		TEXAS INSTRUMENTS



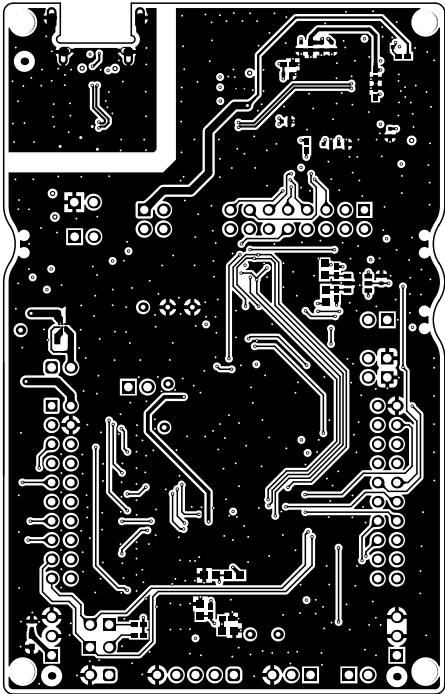
ALL ARTWORK VIEWED FROM TOP SIDE	BOARD #: MCUI78	REV: E2	SUN REV: Not in version control
LAYER NAME = Top Signal	TID #: N/A		
PLOT NAME = Top Layer	GENERATED : 2/19/2026 9:39:08 AM		TEXAS INSTRUMENTS



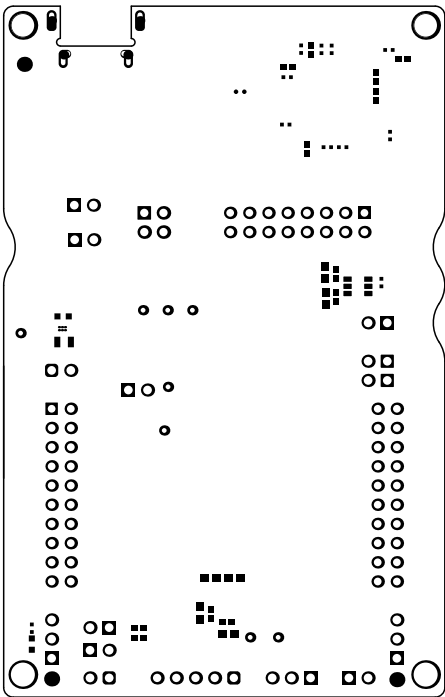
ALL ARTWORK VIEWED FROM TOP SIDE	BOARD #: MCU178	REV: E2	SUN REV: Not in version control
LAYER NAME =	TID #: N/A		
PLOT NAME = Signal Layer 1	GENERATED : 2/19/2026 9:39:09 AM		TEXAS INSTRUMENTS



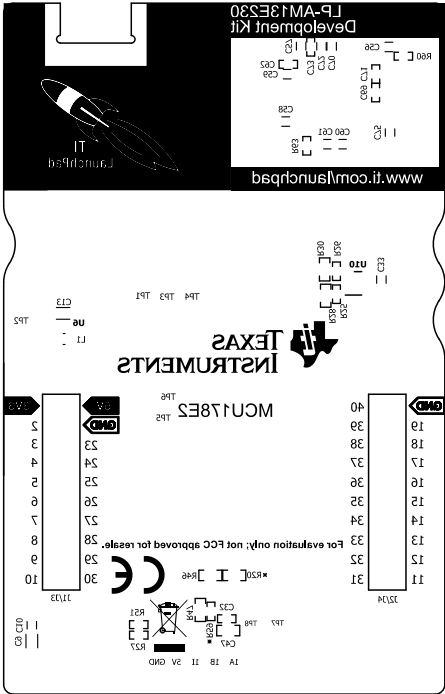
ALL ARTWORK VIEWED FROM TOP SIDE	BOARD #: MCU178	REV: E2	SUN REV: Not in version control
LAYER NAME =	TID #: N/A		
PLOT NAME = Signal Layer 2	GENERATED : 2/19/2026	9:39:09 AM	TEXAS INSTRUMENTS



ALL ARTWORK VIEWED FROM TOP SIDE	BOARD #: MCUI78	REV: E2	SUN REV: Not in version control
LAYER NAME = Bottom Signal	TID #: N/A		
PLOT NAME = Bottom Layer	GENERATED : 2/19/2026 9:39:09 AM		TEXAS INSTRUMENTS

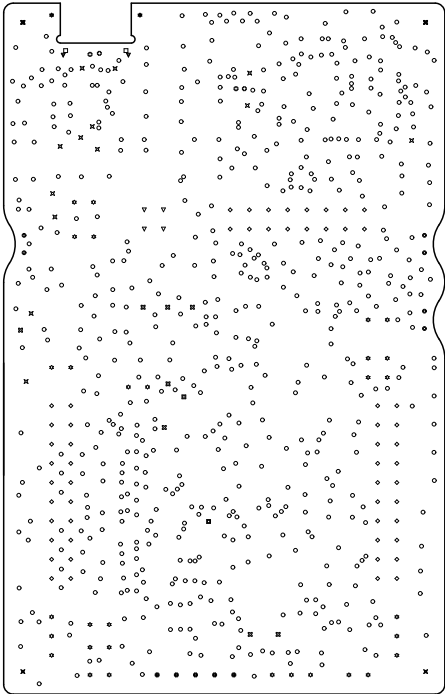


ALL ARTWORK VIEWED FROM TOP SIDE	BOARD #: MCU178	REV: E2	SUN REV: Not in version control
LAYER NAME = Bottom Solder	TID #: N/A		
PLOT NAME = Bottom Solder Mask	GENERATED : 2/19/2026 9:39:09 AM		TEXAS INSTRUMENTS



Layer	Name	Material	Thickness	Constant	Board Layer Stack
1	Top Overlay				
2	Top Solder	Solder Resist	0.40mil	3.5	
3	Top Layer	Copper	1.40mil		
4	Dielectric1	FR-4 High Tg	8.00mil	4.2	
5	Signal Layer 1	Copper	1.40mil		
6	Dielectric 2	FR-4 High Tg	40.00mil	4.2	
7	Signal Layer 2	Copper	1.40mil		
8	Dielectric 3	FR-4 High Tg	8.00mil	4.2	
9	Bottom Layer	Copper	1.40mil		
10	Bottom Solder	Solder Resist	0.40mil	3.5	
11	Bottom Overlay				

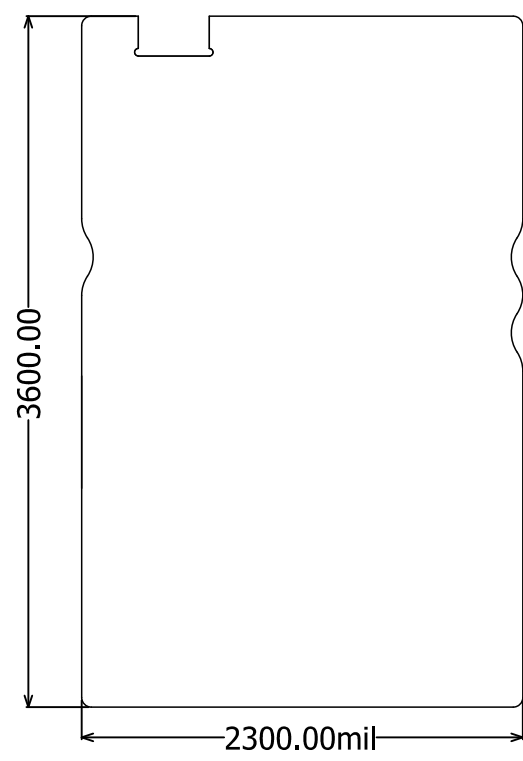
ALL ARTWORK VIEWED FROM TOP SIDE	BOARD #: MCU178	REV: E2	SUN REV: Not in version control
LAYER NAME = Bottom Overlay	TID #: N/A		
PLOT NAME = Bottom Overlay	GENERATED : 2/19/2026 9:39:09 AM	TEXAS INSTRUMENTS	



Symbol	Quantity	Finished Hole Size	Plated	Hole Type	Drill Layer Pair	Hole Tolerance
⊗	6	35.43mil (0.900mm)	NPTH	Round	Top Layer - Bottom Layer	+/-0.00mil
○	2	118.11mil (3.000mm)	NPTH	Round	Top Layer - Bottom Layer	
□	4	125.00mil (3.175mm)	NPTH	Round	Top Layer - Bottom Layer	
⊗	4	7.87mil (0.200mm)	PTH	Round	Top Layer - Bottom Layer	
⊗	33	9.84mil (0.250mm)	PTH	Round	Top Layer - Bottom Layer	
⊗	7	15.75mil (0.400mm)	PTH	Round	Top Layer - Bottom Layer	
⊗	8	25.00mil (0.635mm)	PTH	Round	Top Layer - Bottom Layer	
▽	56	40.16mil (1.020mm)	PTH	Round	Top Layer - Bottom Layer	
⊗	5	43.31mil (1.100mm)	PTH	Round	Top Layer - Bottom Layer	
◇	4	43.31mil (1.100mm)	PTH	Round	Top Layer - Bottom Layer	
⊗	27	45.28mil (1.150mm)	PTH	Round	Top Layer - Bottom Layer	+/-1.97mil
⊗	2	27.56mil (0.700mm)	PTH	Slot	Top Layer - Bottom Layer	
▽	2	59.06mil (1.500mm)	PTH	Slot	Top Layer - Bottom Layer	
⊗	2	74.80mil (1.900mm)	PTH	Slot	Top Layer - Bottom Layer	
	162 Total					

Slot definitions : Routed Path Length = Calculated from tool start centre position to tool end centre position.
Hole Length = Routed Path Length + Tool Size = Slot length as defined in the PCB layout

ALL ARTWORK VIEWED FROM TOP SIDE	BOARD #: MCU178	REV: E2	SUN REV: Not in version control
LAYER NAME = Drill Drawing	TID #: N/A		
PLOT NAME = Drill Drawing	GENERATED : 2/19/2026 9:39:09 AM		TEXAS INSTRUMENTS



ALL ARTWORK VIEWED FROM TOP SIDE	BOARD #: MCU178	REV: E2	SUN REV: Not in version control
LAYER NAME = M2 Board Dimensions	TID #: N/A		
PLOT NAME = Board Dimensions	GENERATED : 2/19/2026 9:39:09 AM		TEXAS INSTRUMENTS